

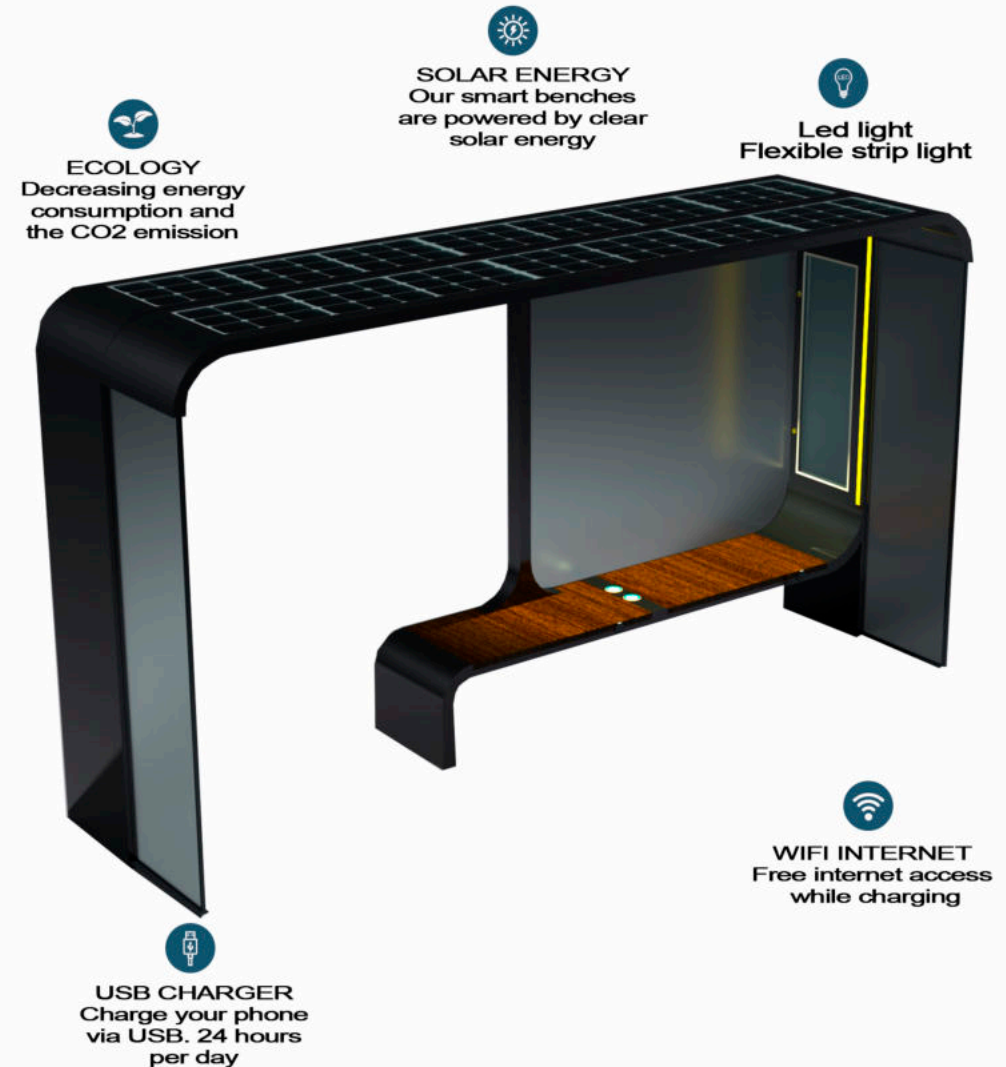
ADLIS

**SMART BENCH
SMART CONTAINER
SMART HOME
SMART SECURITY**


WEIYIN

TECHNOLOGY

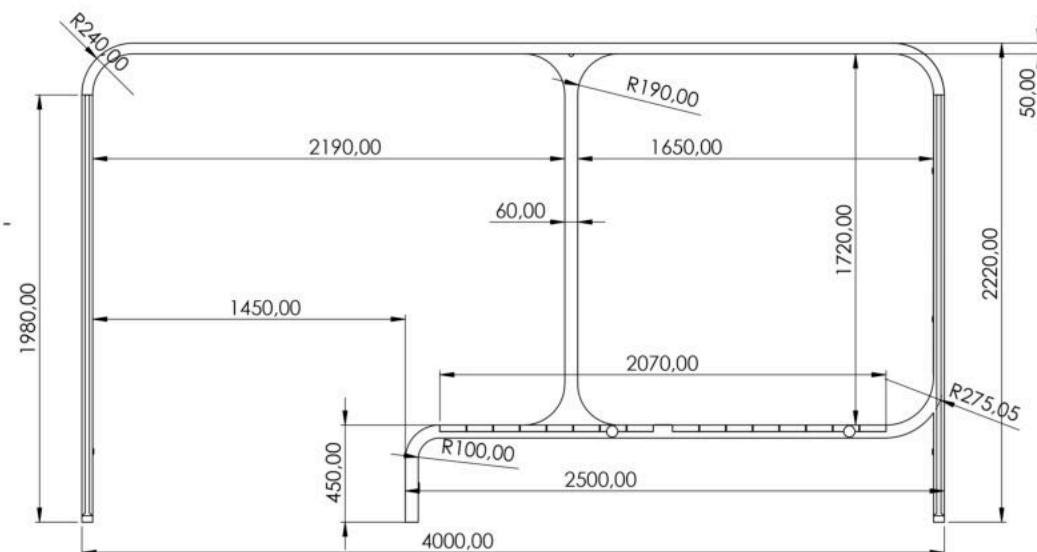
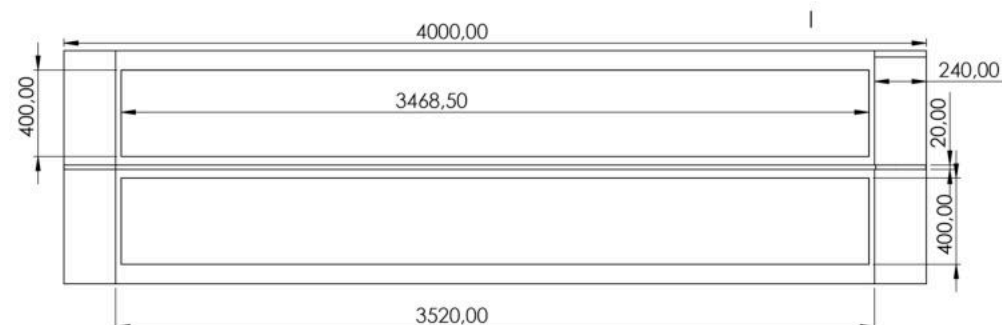
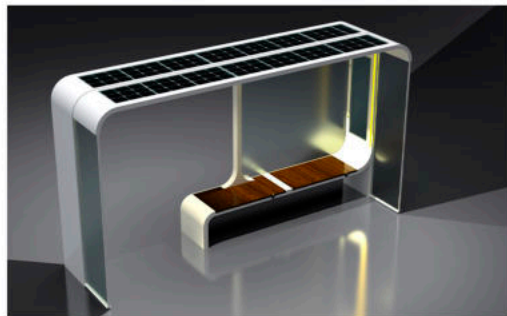
DATA SHEET: WYC1817 - 4M



Characteristics

Model	WYS1817	Appearance	
Size	400*108*233		
N.W.	550KG		
G.W.	600KG		
Certificate	CE ISO		
Function	In sunlight condition, product will charge build-in battery by solar panel, and then provide energy for phone chargers, lights and advertising display. Optional total smart city with our platform.		
Material	Stainless steel #201 + WPC WOOD		
Solar panel	Monocrystalline Silicon		
Solar power	420W		
AC power	Optional		
Controller	MPPT Controller		
Battery type	Gel battery, LiFePo4 optional		
Working temp.	-20C-40C/-20C-65C		
Battery capacity	12V/200Ah		
USB charger	2		
Wireless charger	2		
LED light	LED strip white+sensor for light		
Advertising display	1 LED light box *2 windows + LED screen optional		
WiFi router	4G/International router / Optional		
Bluetooth/speaker	NO		
Warranty			
Battery notice	The controller works well above -40°C , while the working efficiency of battery is getting less and less under 0°C, when -10°C it already doesn't work. Yet after the temperate rises back to over 0°C, it will work again. Therefore, in very cold winter the chargers on bench don't work. In good sunshine, the battery is fully charged in about 7-8 hours.		


ADLIS 
WEIYIN



A. Description and function:

In sunlight condition, product will charge build-in Li-ion battery by solar panel, and charge cell phones by cables simultaneous. Without sunlight condition, product will charge cell phone by its built-in battery.

B. Intended use:

 This product is intended for outdoor use only. Please place it on a flat floor and away from any shade. If in the shade, the solar panel will not function effectively.

C. Package Content:

D. Safety instructions:



ATTENTION!

We recommend that a qualified person use it to assemble and disassemble the product to avoid any risk of product deterioration.

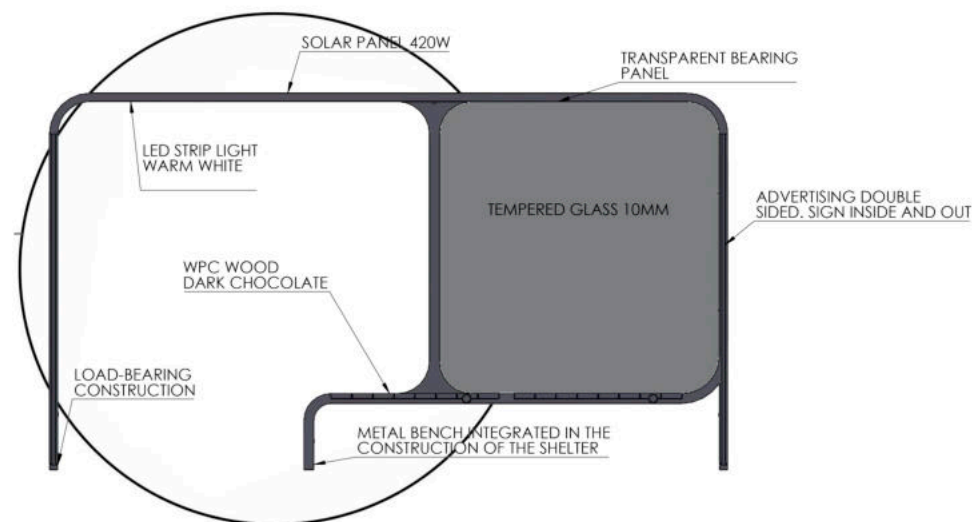
The product is self-service, that is, users do not need help to charge their device.

Read carefully and follow the safety instructions for care, maintenance, storage and transport.

We recommend using the original packaging for transportation to protect the product from dust and moisture.

- We are not responsible for damage to persons or property caused by improper installation or operation not described in this guide. Any alteration and / or modification of the product or its accessories immediately voids the warranty.

E. Connection and operation:



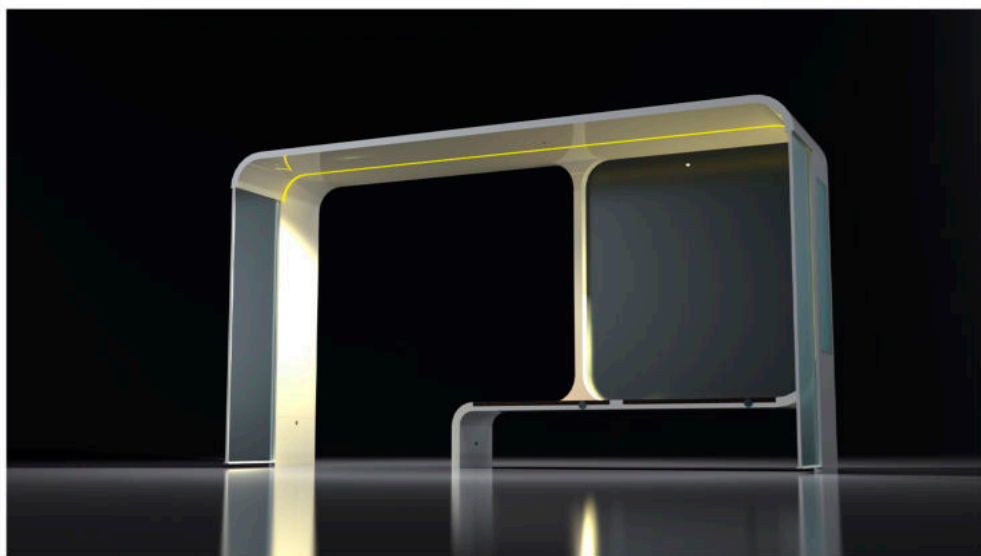
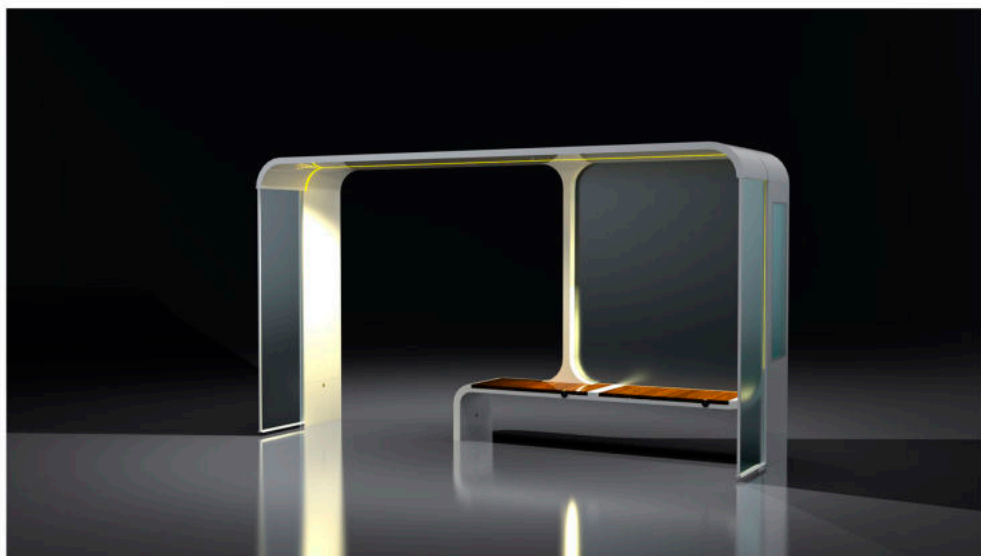
F. Care, maintenance, storage and transport:



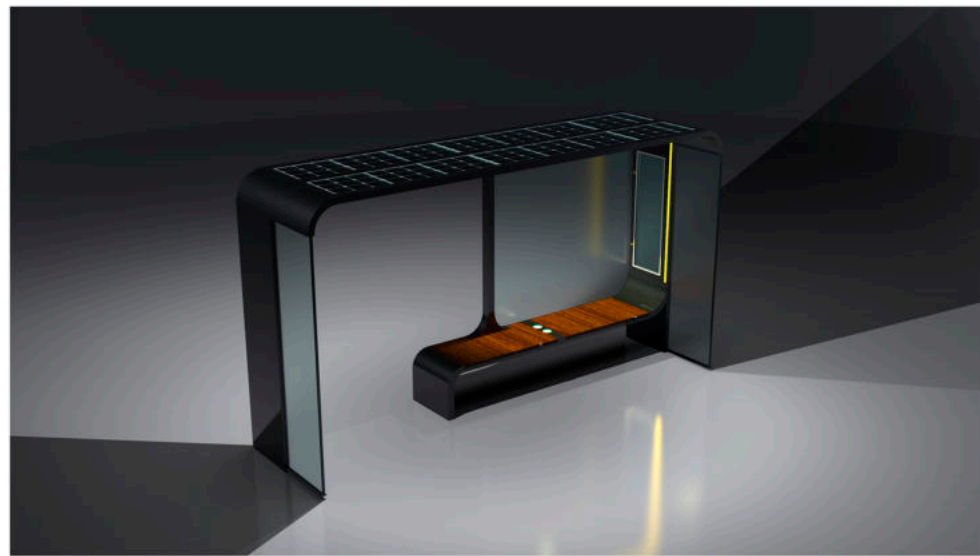
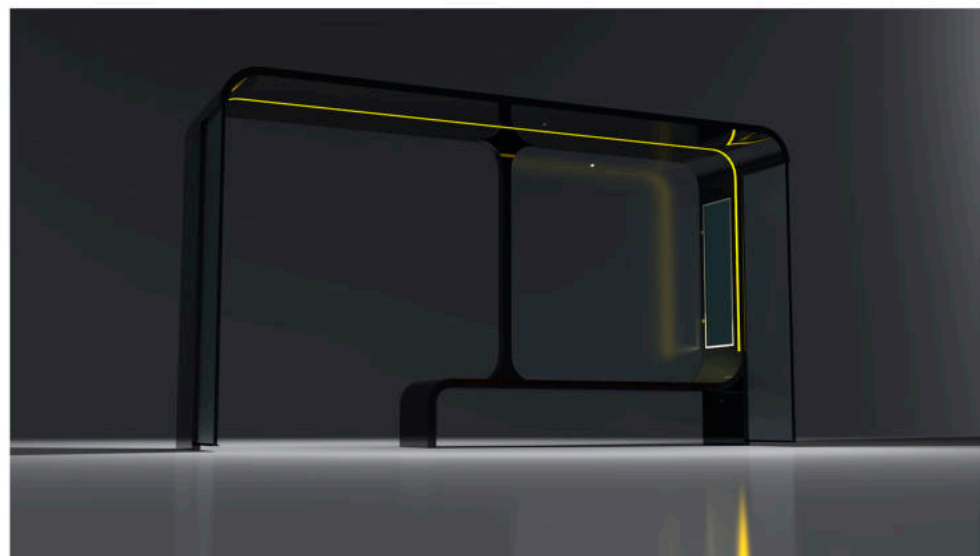
WARNING!

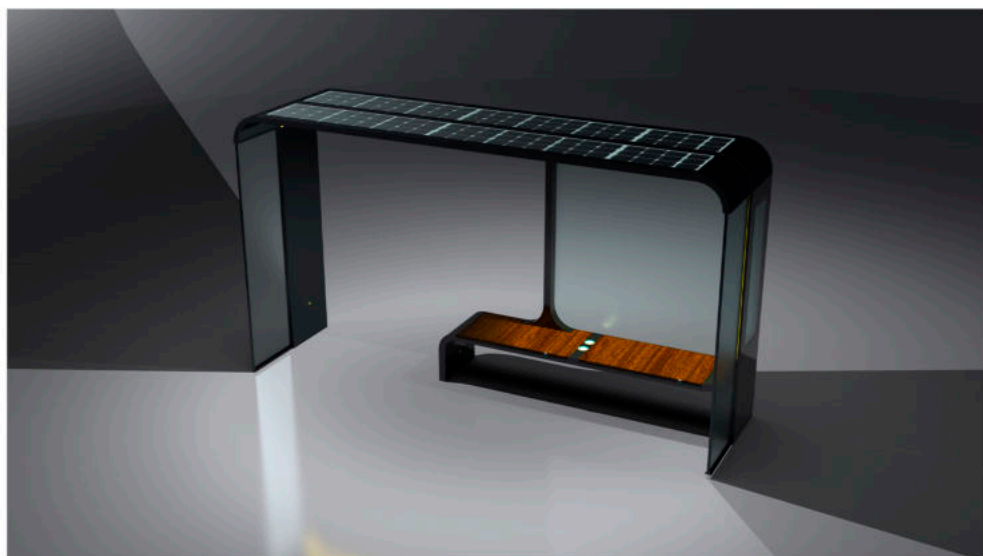
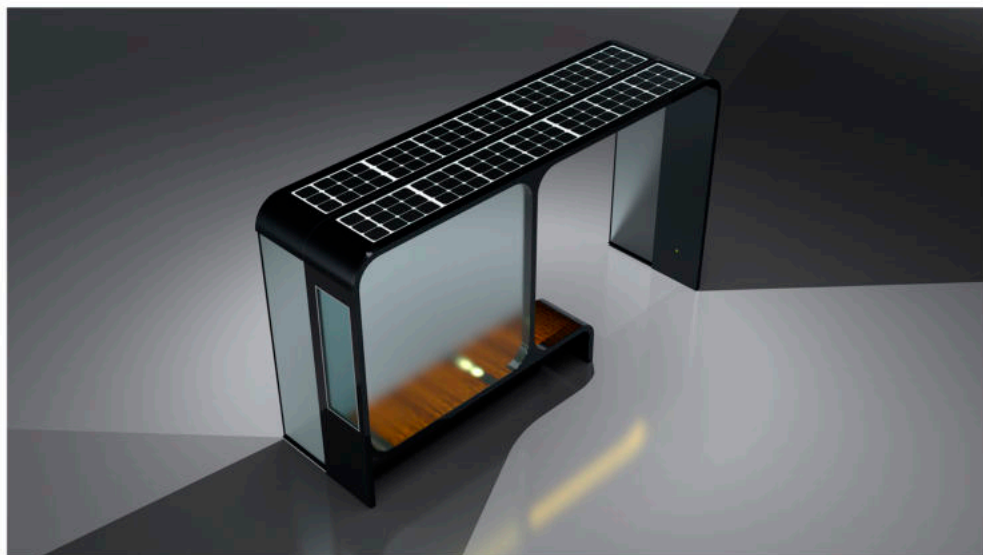
We recommend that a qualified person use it to assemble and disassemble the product to avoid any risk of product deterioration.

- We grant a conditional warranty of 2 year for this device from the purchase data.
- The warranty also does not cover accidental damage or vandalism caused to the product.
- The warranty also does not cover the charging cables. We have no control over how users treat cables once the product is installed on your premises; replacement cables can be purchased at an additional cost.
- We are not responsible for damage to persons or property caused by improper installation or operation not described in this guide. Any alteration and / or modification of the product or its accessories immediately voids the warranty.

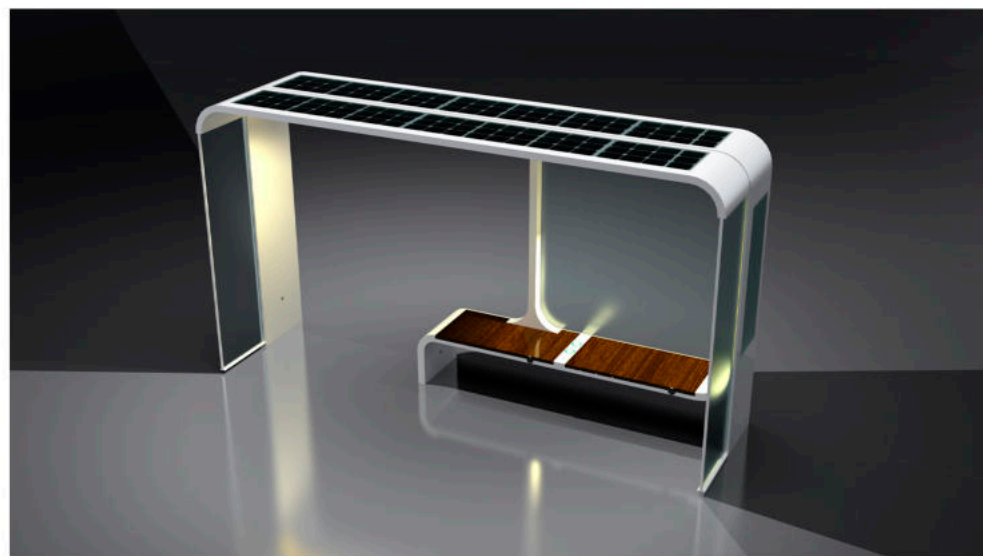
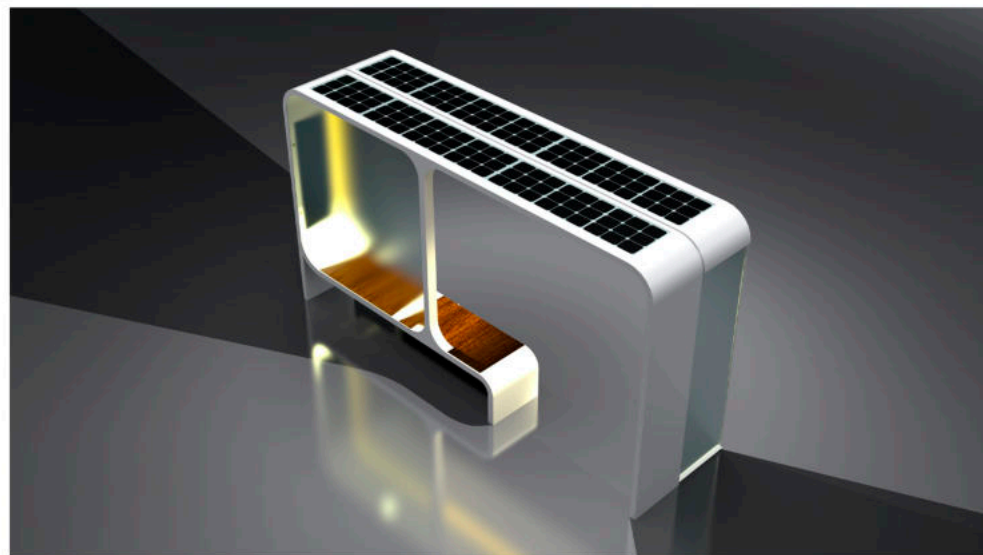


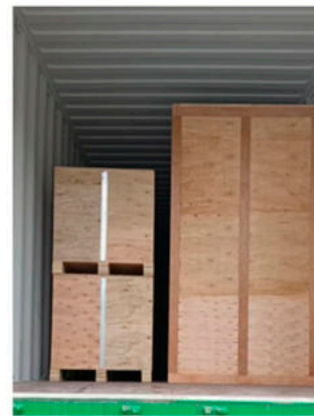
ADLIS 
WEIYIN





ADLIS 
WEIYIN





Brands and Numbers	Property Description	UNITS	UNITS/ CTN	CTNS	G.W.(kgs)	N.W.(kgs)	MEAS (CM)
ADLIS/WEIYIN CORPORATION	WYS1817	1	1	1	600KG	550KG	
Total		1	1	1	600KG	550KG	7CBM